

# Programmes After Market Services NHP-2 Series Transceivers

## 4. Parts Lists

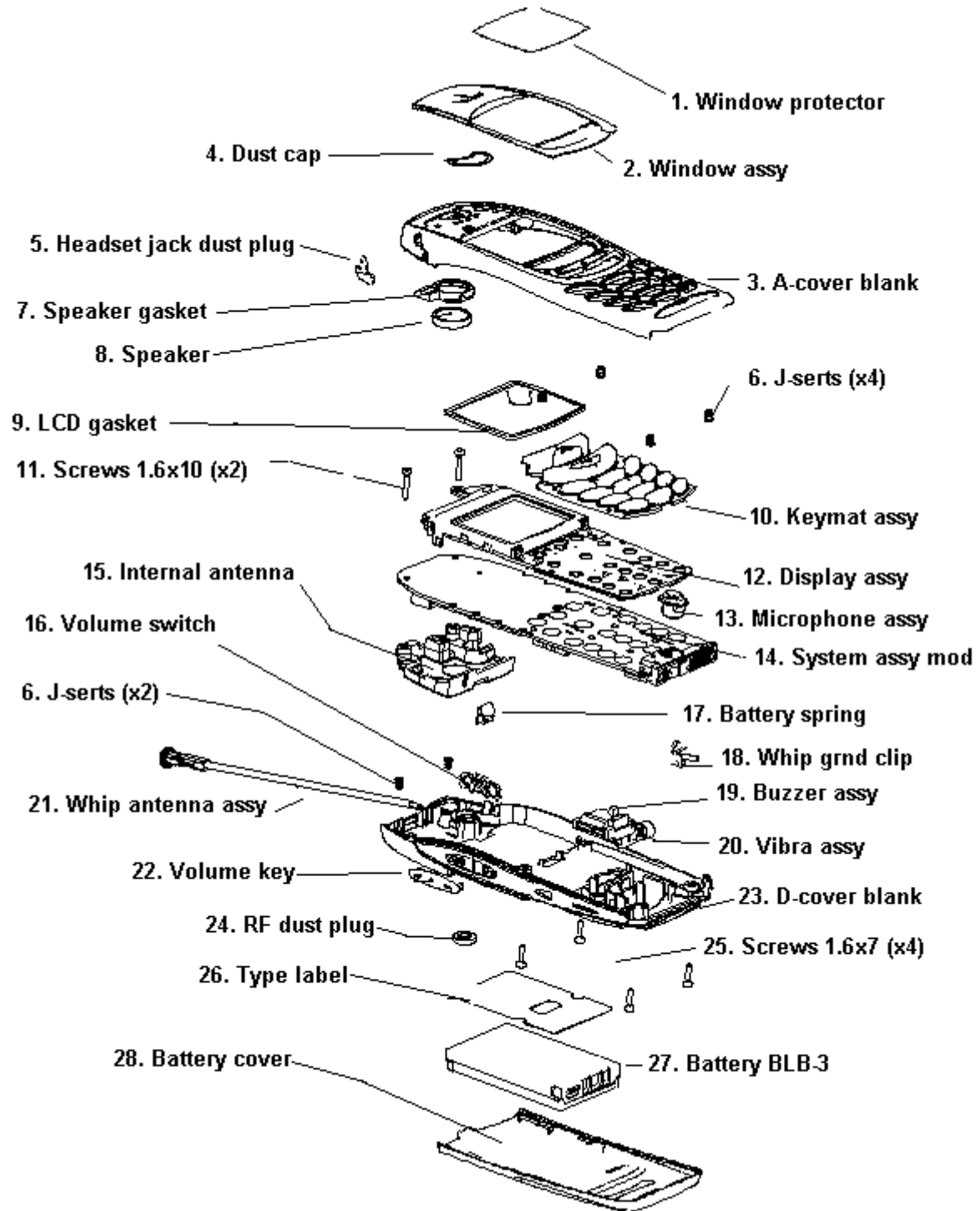


**Contents**

	<b>Page No</b>
Exploded View.....	5
Assembly Parts .....	6
Mechanics Module .....	7
Parts Lists.....	8
NHP-2AX (6385) — EDMS Issue 11.0 Code: 0201685 .....	8
NHP-2FX (6370) — EDMS Issue 4.0 Code: 0202037 .....	24



# Exploded View



## Assembly Parts

Item	Qty	Description	Product code	Value, Type
1	1	Window protector	9480830	DMD06677
2	1	Window assembly	9458105	DMC03594
3	1	A-cover blank	9490418	DMD07197
4	1	Dust cap	9451139	DMD02859
5	1	Headset jack dust plug	9460414	DMD07393
6	6	J-serts	6330003	DMD00780
7	1	Speaker gasket	9480888	DMD07670
8	1	Speaker	5140067	DNS01562-EN/DNT09156-EN
9	1	LCD gasket	9480711	DMD07302
10	1	Keymat assembly	9790478	DMC03591
11	2	Screws 1.6x10	6190045	DMD06162
12	1	Display assembly	9480658	DMC03664
13	1	Microphone assembly	9467062	DMC04086
14	1	System assy module	0201685	DHB00086/DHC00054
15	1	Internal antenna	0660244	DHS01201/DNS03278
16	1	Volume switch	5219021	DNS04540
17	1	Battery spring	9560167	DMD08257
18	1	Whip ground clip	9510749	DMD07711
19	1	Buzzer assembly	5140237	DHS01385
20	1	Vibrator assembly	6800049	DMC02418
21	1	Whip antenna assembly	0660263	DMC03679
22	1	Volume key	9790501	DMD07186
23	1	D-cover blank	9451951	DMD07049
24	1	RF dust plug	9451139	DMD02859
25	4	Screws 1.6x7	6290101	DMD06364
26	1	Type label	9370588	DMC03884
27	1	Battery BLB-3	0670331	DMD05239
28	1	Battery cover	9780278	DMD06669

## Mechanics Module

Qty	Description	Product Code
1	Internal antenna 824-894/1850-1990MHz	0660244
1	Speaker + spring 103+-3DB 32R D13.2	5140067
1	Sm conn 4POL 2.5mm 3V spr	5469801
2	Machine screw M1.6X11 DMD09438	6190063
4	Screw M1.6X7 DMD06365 T6 HD953	6290101
1	Dust cap DMD02859 NHE-3NX	9451139
1	Cond.mic -42+-3DB 1.5K D6.0	5140113
1	Microphone boot DMD07530 HDAA3	9460413
1	Display assy DMC03664 HDAA3	9480658
1	Ferrite plate 35.0X35.0X1.0 mm	3200003
1	LCD 96X65 full dot matrix+driver GD51	4850193
1	Conn elast P0.1 AU/SI L=12.9 mm	5407799
1	Light guide DMD07057 HDAA3	9467057
1	Reflector DMD06178 HDAH0	9480636
1	Display cushion DMD07056 HDAA3	9480657
1	Display frame DMD07055 HDAA3	9510672
1	Dome sheet DMD08065 HDA63_73	9795098
1	Dome sheet DMD07789 Adhesive Linus	9795096
1	Speaker_gasket_ID2 DMD07670	9480888
1	D-cover assy DMC03913 HDAA3	9497117
1	AHW-2 whip assembly CDMA DB NHP-3A	0660263
1	SW volume up/down 30V 50MA	5219021
2	J-sert DMD00780 HD843	6330003
1	Vib mot. assy 1.3V 115MA 9500rpm	6800049
1	D-cover blank DMD07049 HDAA3	9451951
1	Antenna ground clip DMD07711	9510749
1	Battery spring HDAA3 DMD06257	9560167
1	Volume key DMD07186_Linus	9790501
1	Keymat DMC03591 HDA63_73 Linus	9790478

## Parts Lists

### NHP-2AX (6385) – EDMS Issue 11.0 Code: 0201685

Item	Code	Side	X	Y	Description	Value	Type
R100	1620027	Top	U	6	res network	0W06 2X47R J	0404
R101	1620027	Top	R	5	res network	0W06 2X47R J	0404
R102	1430812	Top	R	5	chip resistor	0W06 220K J	0402
R104	1620027	Top	X	3	res network	0W06 2X47R J	0404
R107	1430778	Top	X	5	chip resistor	0W06 10K J	0402
R108	1430778	Top	X	5	chip resistor	0W06 10K J	0402
R109	4120011	Top	X	3	ZDIX4 IP4043CX5	CA 14V2 10W	CSP5
R150	1620103	Top	D	7	res network	0W06 2X22R J	0404
R152	1430796	Top	T	7	chip resistor	0W06 47K J	0402
R154	1620031	Top	T	7	res network	0W06 2X1K0 J	0404
R155	1430796	Top	X	4	chip resistor	0W06 47K J	0402
R156	1620031	Top	T	7	res network	0W06 2X1K0 J	0404
R158	1430778	Top	U	7	chip resistor	0W06 10K J	0402
R159	1430762	Top	U	7	chip resistor	0W06 2K2 J	0402
R160	1430718	Top	X	3	chip resistor	0W06 47R J	0402
R161	1430796	Top	U	7	chip resistor	0W06 47K J	0402
R162	1430762	Top	D	7	chip resistor	0W06 2K2 J	0402
R164	1620031	Top	T	7	res network	0W06 2X1K0 J	0404
R166	1430796	Top	T	7	chip resistor	0W06 47K J	0402
R167	1620031	Top	W	5	res network	0W06 2X1K0 J	0404
R169	1430718	Top	D	7	chip resistor	0W06 47R J	0402
R170	1430804	Top	W	4	chip resistor	0W06 100K J	0402
R171	1620031	Top	D	8	res network	0W06 2X1K0 J	0404
R172	1430796	Top	T	7	chip resistor	0W06 47K J	0402
R173	1620031	Top	X	4	res network	0W06 2X1K0 J	0404
R174	1430778	Top	X	4	chip resistor	0W06 10K J	0402
R176	1620031	Top	W	5	res network	0W06 2X1K0 J	0404
R179	1430754	Top	D	7	chip resistor	0W06 1K0 J	0402



Item	Code	Side	X	Y	Description	Value	Type
R200	1419003	Top	U	6	chip resistor	0W5 0R22 J 200PPM	1210
R202	1620043	Top	R	5	res network	0W03 4X100K J	0804
R206	1430770	Top	R	5	chip resistor	0W06 4K7 J	0402
R207	1430770	Top	R	5	chip resistor	0W06 4K7 J	0402
R300	1411669	Top	U	4	chip resistor	0W1 22R J	0805
R301	1411669	Top	U	4	chip resistor	0W1 22R J	0805
R304	1430770	Top	B	7	chip resistor	0W06 4K7 J	0402
R350	1419009	Top	C	6	chip resistor	0W5 4R7 J 200ppm	1210
R427	1430754	Top	R	4	chip resistor	0W06 1K0 J	0402
R428	1430770	Top	S	2	chip resistor	0W06 4K7 J	0402
R430	1430754	Top	P	3	chip resistor	0W06 1K0 J	0402
R431	1430770	Top	P	3	chip resistor	0W06 4K7 J	0402
R433	1430754	Top	R	5	chip resistor	0W06 1K0 J	0402
R434	1430770	Top	R	5	chip resistor	0W06 4K7 J	0402
R435	1430770	Top	P	3	chip resistor	0W06 4K7 J	0402
R450	1430770	Top	O	5	chip resistor	0W06 4K7 J	0402
R501	1430700	Top	K	7	chip resistor	0W06 10R J	0402
R503	1430778	Top	K	8	chip resistor	0W06 10K J	0402
R505	1430700	Top	J	5	chip resistor	0W06 10R J	0402
R506	1430718	Top	K	5	chip resistor	0W06 47R J	0402
R508	1430766	Top	L	8	chip resistor	0W06 3K9 J	0402
R509	1430740	Top	K	5	chip resistor	0W06 330R J	0402
R510	1430804	Top	L	8	chip resistor	0W06 100K J	0402
R511	1430794	Top	L	8	chip resistor	0W06 39K J	0402
R512	1430700	Top	L	8	chip resistor	0W06 10R J	0402
R513	1430700	Top	K	7	chip resistor	0W06 10R J	0402
R515	1430700	Top	J	7	chip resistor	0W06 10R J	0402
R517	1430772	Top	N	8	chip resistor	0W06 5K6	0402
R518	1430740	Top	N	8	chip resistor	0W06 330R J	0402
R519	1430706	Top	K	5	chip resistor	0W06 15R J	0402
R520	1430754	Top	N	8	chip resistor	0W06 1K0 J	0402

Item	Code	Side	X	Y	Description	Value	Type
R521	1430764	Top	N	8	chip resistor	0W06 3K3 J	0404
R522	1430728	Top	N	7	chip resistor	0W06 120R J	0402
R523	1430740	Top	K	5	chip resistor	0W06 330R J	0402
R524	1430790	Top	N	6	chip resistor	0W06 27K J	0402
R550	1430778	Top	L	7	chip resistor	0W06 10K J	0402
R601	1430758	Top	N	3	chip resistor	0W06 1K5 J	0402
R602	1430790	Top	M	2	chip resistor	0W06 27K J	0402
R604	1430772	Top	L	3	chip resistor	0W06 5K6	0402
R605	1430770	Top	N	4	chip resistor	0W06 4K7 J	0402
R606	1430770	Top	N	4	chip resistor	0W06 4K7 J	0402
R607	1430762	Top	M	5	chip resistor	0W06 2K2 J	0402
R609	1430758	Top	N	3	chip resistor	0W06 1K5 J	0402
R611	1430804	Top	N	2	chip resistor	0W06 100K J	0402
R621	1430774	Top	M	2	chip resistor	0W06 6K8 J	0402
R702	1430754	Top	M	6	chip resistor	0W06 1K0 J	0402
R703	1430744	Top	N	6	chip resistor	0W06 470R J	0402
R704	1430770	Top	M	5	chip resistor	0W06 4K7 J	0402
R705	1430790	Top	M	6	chip resistor	0W06 27K J	0402
R706	1430776	Top	N	7	chip resistor	0W06 8K2 J	0402
R721	1430796	Top	H	5	chip resistor	0W06 47K J	0402
R722	1430796	Top	H	5	chip resistor	0W06 47K J	0402
R723	1430796	Top	H	5	chip resistor	0W06 47K J	0402
R749	1430681	Top	G	8	chip resistor	0W06 4R3 J	0402
R750	1430724	Top	H	8	chip resistor	0W06 82R J	0402
R801	1430744	Top	I	1	chip resistor	0W06 470R J	0402
R802	1430748	Top	G	4	chip resistor	0W06 680R J	0402
R803	1430758	Top	I	4	chip resistor	0W06 1K5 J	0402
R804	1430740	Top	H	3	chip resistor	0W06 330R J	0402
R805	1430776	Top	H	3	chip resistor	0W06 8K2 J	0402
R806	1430776	Top	H	3	chip resistor	0W06 8K2 J	0402
R807	1430758	Top	I	3	chip resistor	0W06 1K5 J	0402
R808	1820035	Top	J	4	NTC res	47K J B=4050+-3%	0805

Item	Code	Side	X	Y	Description	Value	Type
R816	1430776	Top	H	3	chip resistor	0W06 8K2 J	0402
R817	1430776	Top	I	3	chip resistor	0W06 8K2 J	0402
R821	1430754	Top	I	1	chip resistor	0W06 1K0 J	0402
C100	2320584	Top	W	7	chip cap	X7R 1N0 J 50V	0402
C101	2320544	Top	X	3	chip cap	NP0 22P J 50V	0402
C102	2320552	Top	U	4	chip cap	NP0 47P J 50V	0402
C103	2320544	Top	W	3	chip cap	NP0 22P J 50V	0402
C104	2320544	Top	W	3	chip cap	NP0 22P J 50V	0402
C107	2320778	Top	X	5	chip cap	X7R 10N K 16V	0402
C108	2320552	Top	U	5	chip cap	NP0 47P J 50V	0402
C109	2320552	Top	U	4	chip cap	NP0 47P J 50V	0402
C150	2320552	Top	S	7	chip cap	NP0 47P J 50V	0402
C151	2320805	Top	X	4	chip cap	X5R 100N K 10V	0402
C152	2320552	Top	S	7	chip cap	NP0 47P J 50V	0402
C154	2320805	Top	U	7	chip cap	X5R 100N K 10V	0402
C155	2320805	Top	U	7	chip cap	X5R 100N K 10V	0402
C156	2320552	Top	X	4	chip cap	NP0 47P J 50V	0402
C158	2320552	Top	S	8	chip cap	NP0 47P J 50V	0402
C164	2313213	Top	T	8	chip cap	X5R10U K 6V3	1206
C165	2320805	Top	U	7	chip cap	X5R 100N K 10V	0402
C166	2320552	Top	D	7	chip cap	NP0 47P J 50V	0402
C168	2320805	Top	U	7	chip cap	X5R 100N K 10V	0402
C169	2320805	Top	D	7	chip cap	X5R 100N K 10V	0402
C170	2320552	Top	S	7	chip cap	NP0 47P J 50V	0402
C172	2320552	Top	S	7	chip cap	NP0 47P J 50V	0402
C174	2320805	Top	U	7	chip cap	X5R 100N K 10V	0402
C175	2320805	Top	U	7	chip cap	X5R 100N K 10V	0402
C176	2320552	Top	X	5	chip cap	NP0 47P J 50V	0402

Item	Code	Side	X	Y	Description	Value	Type
C180	2320552	Top	S	8	chip cap	NPO 47P J 50V	0402
C181	2320552	Top	S	8	chip cap	NPO 47P J 50V	0402
C184	2320552	Top	S	8	chip cap	NPO 47P J 50V	0402
C186	2312243	Top	C	7	chip cap	X5R 4U7 K 6V3	0805
C193	2320560	Top	U	7	chip cap	NPO 100P J 50V	0402
C194	2320805	Top	U	7	chip cap	X5R 100N K 10V	0402
C195	2320560	Top	U	7	chip cap	NPO 100P J 50V	0402
C202	2320778	Top	U	5	chip cap	X7R 10N K 16V	0402
C203	2320805	Top	S	9	chip cap	X5R 100N K 10V	0402
C211	2320481	Top	T	8	chip cap	X5R 1U K 6V3	0603
C222	2320805	Top	R	6	chip cap	X5R 100N K 10V	0402
C223	2320805	Top	P	8	chip cap	X5R 100N K 10V	0402
C224	2320805	Top	P	8	chip cap	X5R 100N K 10V	0402
C225	2320805	Top	R	6	chip cap	X5R 100N K 10V	0402
C226	2320481	Top	T	7	chip cap	X5R 1U K 6V3	0603
C227	2320778	Top	R	5	chip cap	X7R 10N K 16V	0402
C229	2320805	Top	R	6	chip cap	X5R 100N K 10V	0402
C230	2320778	Top	S	5	chip cap	X7R 10N K 16V	0402
C232	2320778	Top	R	5	chip cap	X7R 10N K 16V	0402
C233	2320481	Top	T	7	chip cap	X5R 1U K 6V3	0603
C234	2320481	Top	R	9	chip cap	X5R 1U K 6V3	0603
C235	2320481	Top	S	9	chip cap	X5R 1U K 6V3	0603
C237	2320481	Top	U	5	chip cap	X5R 1U K 6V3	0603
C238	2320805	Top	S	6	chip cap	X5R 100N K 10V	0402
C239	2320481	Top	R	9	chip cap	X5R 1U K 6V3	0603
C240	2320481	Top	Q	9	chip cap	X5R 1U K 6V3	0603

Item	Code	Side	X	Y	Description	Value	Type
C241	2320805	Top	P	7	chip cap	X5R 100N K 10V	0402
C242	2320481	Top	T	6	chip cap	X5R 1U K 6V3	0603
C243	2320481	Top	T	7	chip cap	X5R 1U K 6V3	0603
C245	2320481	Top	Q	9	chip cap	X5R 1U K 6V3	0603
C246	2320481	Top	P	7	chip cap	X5R 1U K 6V3	0603
C247	2320481	Top	P	6	chip cap	X5R 1U K 6V3	0603
C248	2320481	Top	P	6	chip cap	X5R 1U K 6V3	0603
C249	2320481	Top	P	6	chip cap	X5R 1U K 6V3	0603
C250	2320481	Top	P	6	chip cap	X5R 1U K 6V3	0603
C251	2320481	Top	R	9	chip cap	X5R 1U K 6V3	0603
C252	2320481	Top	P	7	chip cap	X5R 1U K 6V3	0603
C253	2320481	Top	P	7	chip cap	X5R 1U K 6V3	0603
C254	2320481	Top	P	6	chip cap	X5R 1U K 6V3	0603
C255	2320481	Top	P	7	chip cap	X5R 1U K 6V3	0603
C256	2320481	Top	P	6	chip cap	X5R 1U K 6V3	0603
C257	2320481	Top	P	7	chip cap	X5R 1U K 6V3	0603
C258	2320481	Top	P	7	chip cap	X5R 1U K 6V3	0603
C259	2320481	Top	P	8	chip cap	X5R 1U K 6V3	0603
C260	2313213	Top	P	9	chip cap	X5R10U K 6V3	1206
C264	2320481	Top	R	9	chip cap	X5R 1U K 6V3	0603
C270	2313213	Top	V	2	chip cap	X5R10U K 6V3	1206
C271	2313213	Top	U	2	chip cap	X5R10U K 6V3	1206
C273	2320805	Top	V	2	chip cap	X5R 100N K 10V	0402
C302	2318003	Top	C	7	chip cap	X5R 1U0 K 16V	0805
C303	2320805	Top	C	6	chip cap	X5R 100N K 10V	0402
C304	2320805	Top	D	6	chip cap	X5R 100N K 10V	0402
C305	2320544	Top	B	7	chip cap	NP0 22P J 50V	0402
C351	2312243	Top	C	6	chip cap	X5R 4U7 K 6V3	0805
C400	2320805	Top	O	3	chip cap	X5R 100N K 10V	0402

Item	Code	Side	X	Y	Description	Value	Type
C401	2320805	Top	R	4	chip cap	X5R 100N K 10V	0402
C402	2320805	Top	O	6	chip cap	X5R 100N K 10V	0402
C403	2320805	Top	O	4	chip cap	X5R 100N K 10V	0402
C404	2320805	Top	O	5	chip cap	X5R 100N K 10V	0402
C405	2320805	Top	R	4	chip cap	X5R 100N K 10V	0402
C422	2320778	Top	R	4	chip cap	X7R 10N K 16V	0402
C423	2320584	Top	S	3	chip cap	X7R 1N0 J 50V	0402
C424	2320778	Top	P	3	chip cap	X7R 10N K 16V	0402
C425	2320584	Top	O	3	chip cap	X7R 1N0 J 50V	0402
C426	2320778	Top	R	5	chip cap	X7R 10N K 16V	0402
C427	2320584	Top	S	5	chip cap	X7R 1N0 J 50V	0402
C428	2320778	Top	P	3	chip cap	X7R 10N K 16V	0402
C429	2320783	Top	R	4	chip cap	X7R 33N K 10V	0402
C430	2320783	Top	S	3	chip cap	X7R 33N K 10V	0402
C431	2320783	Top	P	3	chip cap	X7R 33N K 10V	0402
C435	2320778	Top	L	6	chip cap	X7R 10N K 16V	0402
C450	2320778	Top	S	2	chip cap	X7R 10N K 16V	0402
C451	2320805	Top	P	2	chip cap	X5R 100N K 10V	0402
C454	2320778	Top	S	2	chip cap	X7R 10N K 16V	0402
C502	2320576	Top	N	8	chip cap	X7R 470P J 50V	0402
C503	2320783	Top	L	7	chip cap	X7R 33N K 10V	0402
C504	2320778	Top	K	7	chip cap	X7R 10N K 16V	0402
C505	2320778	Top	L	8	chip cap	X7R 10N K 16V	0402
C507	2320778	Top	K	7	chip cap	X7R 10N K 16V	0402
C508	2420019	Top	L	8	chip cap	PPS 68N J 16V	1210
C509	2320584	Top	L	7	chip cap	X7R 1N0 J 50V	0402
C511	2320481	Top	J	8	chip cap	X5R 1U K 6V3	0603
C512	2320576	Top	N	8	chip cap	X7R 470P J 50V	0402

Item	Code	Side	X	Y	Description	Value	Type
C513	2320576	Top	N	8	chip cap	X7R 470P J 50V	0402
C514	2320550	Top	M	2	chip cap	NPO 39P J 50V	0402
C515	2320552	Top	K	8	chip cap	NPO 47P J 50V	0402
C516	2320508	Top	K	5	chip cap		0402
C517	2320620	Top	K	5	chip cap	X7R 10N J 16V	0402
C518	2320618	Top	K	8	chip cap	X7R 4N7 J 25V	0402
C519	2320520	Top	L	2	chip cap	NPO 2P2 C 50V	0402
C520	2320481	Top	L	5	chip cap	X5R 1U K 6V3	0603
C521	2320805	Top	K	7	chip cap	X5R 100N K 10V	0402
C522	2320778	Top	J	7	chip cap	X7R 10N K 16V	0402
C523	2320584	Top	N	8	chip cap	X7R 1N0 J 50V	0402
C524	2320576	Top	O	5	chip cap	X7R 470P J 50V	0402
C525	2320584	Top	N	7	chip cap	X7R 1N0 J 50V	0402
C526	2320508	Top	L	2	chip cap	NPO 1P0 C 50V	0402
C532	2320536	Top	J	7	chip cap	NPO 10P J 50V	0402
C550	2320584	Top	L	7	chip cap	X7R 1N0 J 50V	0402
C602	2320633	Top	M	4	chip cap	NPO 220P J 25V	0402
C603	2320536	Top	M	2	chip cap	NPO 10P J 50V	0402
C604	2320596	Top	K	5	chip cap	X7R 3N3 J 50V	0402
C605	2320560	Top	M	4	chip cap	NPO 100P J 50V	0402
C606	2320584	Top	M	5	chip cap	X7R 1N0 J 50V	0402
C607	2320778	Top	N	2	chip cap	X7R 10N K 16V	0402
C608	2320536	Top	I	4	chip cap	NPO 10P J 50V	0402
C610	2320596	Top	K	4	chip cap	X7R 3N3 J 50V	0402
C611	2320540	Top	K	3	chip cap	NPO 15P J 50V	0402
C612	2320120	Top	M	4	chip cap	X7R 22N K 25V	0603
C613	2360001	Top	M	4	chip cap	X5R 330N K 10V	0603
C614	2320536	Top	L	3	chip cap	NPO 10P J 50V	0402

Item	Code	Side	X	Y	Description	Value	Type
C615	2320584	Top	L	3	chip cap	X7R 1N0 J 50V	0402
C618	2320481	Top	N	3	chip cap	X5R 1U K 6V3	0603
C619	2320552	Top	K	3	chip cap	NP0 47P J 50V	0402
C620	2320552	Top	K	3	chip cap	NP0 47P J 50V	0402
C621	2320584	Top	K	4	chip cap	X7R 1N0 J 50V	0402
C627	2320536	Top	J	4	chip cap	NP0 10P J 50V	0402
C629	2320532	Top	N	4	chip cap	NP0 6P8 C 50V	0402
C630	2320540	Top	N	4	chip cap	NP0 15P J 50V	0402
C631	2320524	Top	N	4	chip cap	NP0 3P3 C 50V	0402
C632	2320584	Top	N	4	chip cap	X7R 1N0 J 50V	0402
C633	2320552	Top	L	4	chip cap	NP0 47P J 50V	0402
C637	2320560	Top	N	4	chip cap	NP0 100P J 50V	0402
C638	2320778	Top	N	4	chip cap	X7R 10N K 16V	0402
C639	2320596	Top	L	3	chip cap	X7R 3N3 J 50V	0402
C640	2320524	Top	L	4	chip cap	NP0 3P3 C 50V	0402
C642	2320524	Top	L	3	chip cap	NP0 3P3 C 50V	0402
C645	2320536	Top	J	4	chip cap	NP0 10P J 50V	0402
C646	2320536	Top	L	4	chip cap	NP0 10P J 50V	0402
C647	2320536	Top	L	4	chip cap	NP0 10P J 50V	0402
C648	2320584	Top	K	3	chip cap	X7R 1N0 J 50V	0402
C649	2320552	Top	K	3	chip cap	NP0 47P J 50V	0402
C650	2320536	Top	I	4	chip cap	NP0 10P J 50V	0402
C651	2320540	Top	K	4	chip cap	NP0 15P J 50V	0402
C652	2320481	Top	M	5	chip cap	X5R 1U K 6V3	0603
C653	2320584	Top	L	4	chip cap	X7R 1N0 J 50V	0402
C660	2320536	Top	L	4	chip cap	NP0 10P J 50V	0402
C666	2320552	Top	L	2	chip cap	NP0 47P J 50V	0402
C701	2320783	Top	M	5	chip cap	X7R 33N K 10V	0402
C702	2320584	Top	M	6	chip cap	X7R 1N0 J 50V	0402
C704	2320778	Top	N	7	chip cap	X7R 10N K 16V	0402
C706	2320778	Top	N	6	chip cap	X7R 10N K 16V	0402
C707	2320778	Top	N	7	chip cap	X7R 10N K 16V	0402



Item	Code	Side	X	Y	Description	Value	Type
C708	2320778	Top	L	6	chip cap	X7R 10N K 16V	0402
C710	2320778	Top	L	7	chip cap	X7R 10N K 16V	0402
C712	2320778	Top	M	6	chip cap	X7R 10N K 16V	0402
C714	2360001	Top	N	5	chip cap	X5R 330N K 10V	0603
C715	2320620	Top	M	5	chip cap	X7R 10N J 16V	0402
C716	2320548	Top	M	5	chip cap	NPO 33P J 50V	0402
C718	2320778	Top	N	6	chip cap	X7R 10N K 16V	0402
C722	2320778	Top	L	7	chip cap	X7R 10N K 16V	0402
C723	2320778	Top	N	7	chip cap	X7R 10N K 16V	0402
C750	2320560	Top	H	6	chip cap	NPO 100P J 50V	0402
C753	2320560	Top	G	5	chip cap	NPO 100P J 50V	0402
C755	2320516	Top	F	6	chip cap	NPO 1P5 C 50V	0402
C756	2320560	Top	H	6	chip cap	NPO 100P J 50V	0402
C757	2320554	Top	G	6	chip cap	NPO 56P J 50V	0402
C758	2320785	Top	G	6	chip cap	X7R 47N K 10V	0402
C759	2320602	Top	H	6	chip cap	NPO 4P7 C 50V	0402
C760	2320538	Top	G	7	chip cap	NPO 12P J 50V	0402
C761	2320596	Top	H	7	chip cap	X7R 3N3 J 50V	0402
C762	2320805	Top	G	8	chip cap	X5R 100N K 10V	0402
C763	2320538	Top	G	8	chip cap	NPO 12P J 50V	0402
C766	2320560	Top	G	6	chip cap	NPO 100P J 50V	0402
C767	2320554	Top	H	7	chip cap	NPO 56P J 50V	0402
C769	2320584	Top	H	7	chip cap	X7R 1N0 J 50V	0402
C770	2320518	Top	J	8	chip cap	NPO 1P8 C 50V	0402
C771	2320544	Top	M	7	chip cap	NPO 22P J 50V	0402
C772	2320544	Top	M	7	chip cap	NPO 22P J 50V	0402
C777	2320536	Top	I	6	chip cap	NPO 10P J 50V	0402
C778	2320532	Top	I	5	chip cap	NPO 6P8 C 50V	0402
C779	2320532	Top	I	6	chip cap	NPO 6P8 C 50V	0402

Item	Code	Side	X	Y	Description	Value	Type
C781	2320526	Top	H	7	chip cap	NPO 3P9 C 50V	0402
C782	2320526	Top	H	7	chip cap	NPO 3P9 C 50V	0402
C783	2320602	Top	H	6	chip cap	NPO 4P7 C 50V	0402
C784	2320584	Top	H	6	chip cap	X7R 1N0 J 50V	0402
C785	2320508	Top	F	8	chip cap	NPO 1P0 C 50V	0402
C786	2320805	Top	H	7	chip cap	X5R 100N K 10V	0402
C801	2320538	Top	F	2	chip cap	NPO 12P J 50V	0402
C804	2320548	Top	I	3	chip cap	NPO 33P J 50V	0402
C805	2320548	Top	H	3	chip cap	NPO 33P J 50V	0402
C807	2320620	Top	J	4	chip cap	X7R 10N J 16V	0402
C809	2320536	Top	I	5	chip cap	NPO 10P J 50V	0402
C810	2320584	Top	I	3	chip cap	X7R 1N0 J 50V	0402
C811	2320552	Top	K	3	chip cap	NPO 47P J 50V	0402
C812	2320620	Top	I	3	chip cap	X7R 10N J 16V	0402
C817	2313213	Top	J	3	chip cap	X5R10U K 6V3	1206
C818	2320516	Top	H	3	chip cap	NPO 1P5 C 50V	0402
C840	2320481	Top	G	5	chip cap	X5R 1U K 6V3	0603
C841	2313213	Top	J	3	chip cap	X5R10U K 6V3	1206
C842	2320536	Top	G	4	chip cap	NPO 10P J 50V	0402
L100	3203743	Top	W	7	ferrite bead	OR03 42R/ 100MHz 3A	0805
L270	3203743	Top	V	2	ferrite bead	OR03 42R/ 100MHz 3A	0805
L271	3640091	Top	T	2	chip coil 15UH K 0.8A	6.5X5.3X2.0	
L501	3646007	Top	M	2	chip coil 27N J	Q27/800MHz	0402
L503	3646117	Top	L	2	chip coil 5N6 +- 0N1	Q26/1GHz	0402
L504	3646055	Top	L	2	chip coil 8N2 J	Q28/800MHz	0402
L505	3646055	Top	L	2	chip coil 8N2 J	Q28/800MHz	0402
L507	3646131				chip coil 3N9 +- 0N1	Q28/1GHz	0402
L603	3646091	Top	L	3	chip coil 6N8 J	Q27/800MHz	0402
L604	3646091	Top	L	4	chip coil 6N8 J	Q27/800MHz	0402

Item	Code	Side	X	Y	Description	Value	Type
L609	3646131	Top	M	4	chip coil 3N9 +- ON1	Q28/1GHz	0402
L610	3646131	Top	L	4	chip coil 3N9 +- ON1	Q28/1GHz	0402
L611	3645219	Top	N	4	chip coil 10N J	Q31/250MHz	0603
L612	3646127	Top	L	5	chip coil 1N3 +- ON1	Q50/1GHz	0402
L613	3646053	Top	L	4	chip coil 4N7 +- ON3	Q28/800M	0402
L666	3646129	Top	L	5	chip coil 8N2 +- ON1	Q26/1GHz	0402
L701	3645223	Top	L	6	chip coil 33N J	Q40/250MHz	0603
L750	3646415	Top	F	7	chip coil 19N J	Q24/250MHz	0402
L751	3646405	Top	F	7	chip coil 6N2 J	Q20/250MHz	0402
L752	3646061	Top	G	6	chip coil 15N J	Q30/800MHz	0402
L753	3645013	Top	G	6	chip coil 220NH K	Q15/25MHz	0603
L754	3645195	Top	H	7	chip coil 82N J	Q12/100MHz	0603
L755	3646061	Top	G	7	chip coil 15N J	Q30/800MHz	0402
L757	3646061	Top	G	6	chip coil 15N J	Q30/800MHz	0402
L759	3645243	Top	J	7	chip coil 47N J	Q38/200MHz	0603
L760	3645229	Top	M	7	chip coil 120N J	Q32/150MHz	0603
L761	3645229	Top	L	7	chip coil 120N J	Q32/150MHz	0603
L762	3645195	Top	H	7	chip coil 82N J	Q12/100MHz	0603
L764	3645301	Top	H	6	chip coil 180N J	Q13/100MHz	0603
L765	3645229	Top	I	5	chip coil 120N J	Q32/150MHz	0603
L766	3645229	Top	I	6	chip coil 120N J	Q32/150MHz	0603
L767	3645319	Top	J	5	chip coil 220N J	Q25/100MHz	0603
L768	3645319	Top	J	6	chip coil 220N J	Q25/100MHz	0603
L770	3645195	Top	H	6	chip coil 82N J	Q12/100MHz	0603
L771	3646099	Top	H	7	chip coil 2N7 ON1	Q29/1GHz	0402
L773	3646099	Top	G	7	chip coil 2N7 +- ON3	Q29/800M	0402
L801	3645185	Top	H	3	chip coil 10N J	Q12/100MHz	0603
L812	3646063	Top	F	2	chip coil 22N J	Q28/800MHz	0402

Item	Code	Side	X	Y	Description	Value	Type
L851	3646409	Top	W	1	chip coil 1N0 +- ON3	Q34/800M	0402
T603	4550211	Top	L	5	balun transf	1850- 1990MHz	SMD
T604	4550209	Top	K	4	balun transf	824-894MHz	SMD
D100	4110028	Top	W	6	TVS DI 16V 600W	23A	DO214AA
D200	4370841	Top	Q	7	UEM V6.0 W-DOG	ENA T009L	TFBGA168
D400	4370843	Top	Q	5	UPP8M V2.1A F751986A	C035	UBGA144
D450	4341207	Top	Q	2	FLASH NMP DCT4	64MBIT	40MHz
V150	4211623	Top	W	4	MFET N&P FDG6332C	0R4@2V5	SOT363
V151	4211631	Top	W	4	MFETX2 UM6K1N	N 30V 0A1 7R	SOT363
V270	4110441	Top	U	1	SCH DI STPS0520Z	20V 0.5A	SOD123
V300	4860235	Top	J	9	LED LGM470- K2M1-1	GRN 570NM	SMT2
V301	4860235	Top	L	9	LED LGM470- K2M1-1	GRN 570NM	SMT2
V302	4860235	Top	J	1	LED LGM470- K2M1-1	GRN 570NM	SMT2
V303	4860235	Top	L	1	LED LGM470- K2M1-1	GRN 570NM	SMT2
V305	4860235	Top	S	6	LED LGM470- K2M1-1	GRN 570NM	SMT2
V306	4860235	Top	W	4	LED LGM470- K2M1-1	GRN 570NM	SMT2
V307	4860235	Top	W	6	LED LGM470- K2M1-1	GRN 570NM	SMT2
V308	4860235	Top	S	4	LED LGM470- K2M1-1	GRN 570NM	SMT2
V310	4860235	Top	H	1	LED LGM470- K2M1-1	GRN 570NM	SMT2
V311	4860235	Top	H	9	LED LGM470- K2M1-1	GRN 570NM	SMT2
V314	4860235	Top	O	4	LED LGM470- K2M1-1	GRN 570NM	SMT2
V315	4860235	Top	O	6	LED LGM470- K2M1-1	GRN 570NM	SMT2

Item	Code	Side	X	Y	Description	Value	Type
V351	4860171	Top	B	4	IRDA GP2W1002YP	1.152MB	IRDA 1.3
V420	4219921	Top	S	4	TR DTC143ZE N	RBE4K7/47K 0A1	SC75
V421	4219921	Top	R	3	TR DTC143ZE N	RBE4K7/47K 0A1	SC75
V422	4219921	Top	P	2	TR DTC143ZE N	RBE4K7/47K 0A1	SC75
V500	4210100	Top	N	7	TR BC848W N 30V	0.1A100MHz	SOT323
V601	4110921	Top	N	5	CAP DI BBY57- 02W	1/4 16/4P	SOD523
V602	4112491	Top	N	3	PIN DI BA892	35V<OR7@.1 GHs	SOD523
V701	4110921	Top	L	5	CAP DI BBY57- 02W	1/4 16/4P	SOD523
V801	4110055	Top	I	3	SCHDIX2 BAT17- 07 4V	CT<1PF	SOT143
Z300	4120031	Top	W	2	EMI/ESD FILT	EMIF10- 1K010F1	BGA24
Z601	4511331	Top	J	4	DUAL SAW FILT 1850-1885/1875- 1910		
Z604	4511275	Top	K	2	SAW FILT 836.5	+/-12.5MHz/ 3.5DB	3X3
Z750	4511295	Top	G	8	SAW FILT 1960.0MHz/3.7DB		3X3X1
Z751	4511309	Top	G	6	SAW FILT 881.5	+/-12.5MHz/ 3DB	2.5X2
Z752	4510359	Top	I	6	XTAL FILT 128.1MHz	+/-15KHz	3X3X1
Z753	4511329	Top	I	8	SAW FILT 128.1	+/-0.61MHz	9X5X1.6
Z801	4510345	Top	G	4	ISOLATOR 1.85- 1.91GHz/15DB		4X4X2
Z802	4510329	Top	I	2	ISOLATOR 824- 849MHz	.65DB	5X5X2
Z803	4512157	Top	G	2	Fujitsu Cell Duplexer		Columbia
Z804	4512159	Top	E	6	DUPL 1850-1910/ 1930-1990MHz		

Item	Code	Side	X	Y	Description	Value	Type
Z805	4550117	Top	F	3	DIPL 824-894/ 1850-1990MHz		3.2X1.6
N271	4341255	Top	U	2	VREG PWM/LDO	(NCP1500)	MSOP8
N501	4341293	Top	K	8	2XSYNTH 2.5/1.2G	(LMX2370)	MLF24
N502	4341295	Top	L	2	RF AMP G5.5DB/ 2.1GHz	(ULOBA)	SC70-6
N601	4370857	Top	M	3	ROBIND SSBUP- CONVERTER	CDMA	TFBGA
N602	4370887	Top	K	4	HORNET RF2357E7	PCS DRIVER	AMP
N603	4370885	Top	K	3	TOMCAT RF2356E4	CDMA 2000	SOT23-8
N605	4341311	Top	I	4	SWITCH SPDT GAAS	(SW-437)	SC70-6
N701	4370851	Top	M	6	BATMAND RFIC RCVR	CDMA	UFBGA84
N750	4370893	Top	G	7	ALFRED LNA/ MIXER	VQFN-24 R	
N801	4350343	Top	J	2	PW AMP RF9209E6.3	824-849MHz	CDMA
N802	4350339	Top	H	4	PW AMP 1850- 1910MHz	SNAPPER	CDMA
G501	4510347	Top	M	8	VCTCXO 19.2MHz +-1.5PPM	2.7V	
G502	4350329	Top	K	6	VCO 986-1034/ 2040-2140MHz	2.7V	
B200	4510303	Top	T	8	CRYSTAL	32.768KHz+- 20PPM	12.5PF
F100	5119019	Top	X	7	SM FUSE F 1.5A	32V	0603
S300	5209001	Top	B	6	SM SW TACT SPST	12V 50MA	Side Key
X100	5469061	Top	Y	5	SM SYSTEM CONN+3DC+MIC +JACK+6AF		
X101	5400227	Top	T	4	SM BATTERY CONN SPR	4POL 100V 2A	
X800	5429023	Top	E	2	SM CONN COAX+SW+GASK	50R 2.5GHz	
X810	9510434	Top	D	4	SPRING CLIP	M3E14601 NSJ-3	HD925

Item	Code	Side	X	Y	Description	Value	Type
X811	9510434	Top	C	4	SPRING CLIP	M3E14601 NSJ-3	HD925
A400	9517105				UBGA SHIELD ASSY	DMC03681	HDAA3
A600	9517107				RF TX SHIELD ASSY	DMC03682	HDAA3
A700	9517104				RF RX SHIELD ASSY	DMC03680	HDAA3
A800	9510686				DUPLEXER SHIELD	DMD07064	HDAA3

## NHP-2FX (6370) – EDMS Issue 4.0 Code: 0202037

Item	Code	Side	X	Y	Description	Value	Type
R100	1620027	Top	X	3	res network	0W06 2X47R J	0404
R101	1620027	Top	X	3	res network	0W06 2X47R J	0404
R102	1430812	Top	W	3	chip resistor	0W06 220K J	0402
R104	1620027	Top	X	3	res network	0W06 2X47R J	0404
R107	1430778	Top	X	5	chip resistor	0W06 10K J	0402
R108	1430778	Top	X	5	chip resistor	0W06 10K J	0402
R109	4120011	Top	X	3	ZDIX4 IP4043CX5	CA 14V2 10W	CSP5
R150	1620103	Top	D	7	res network	0W06 2X22R J	0404
R152	1430796	Top	T	7	chip resistor	0W06 47K J	0402
R154	1620031	Top	T	7	res network	0W06 2X1K0 J	0404
R155	1430796	Top	X	4	chip resistor	0W06 47K J	0402
R156	1620031	Top	T	7	res network	0W06 2X1K0 J	0404
R158	1430778	Top	U	7	chip resistor	0W06 10K J	0402
R159	1430762	Top	U	7	chip resistor	0W06 2K2 J	0402
R160	1430718	Top	X	3	chip resistor	0W06 47R J	0402
R161	1430796	Top	U	7	chip resistor	0W06 47K J	0402
R162	1430762	Top	D	7	chip resistor	0W06 2K2 J	0402
R164	1620031	Top	T	7	res network	0W06 2X1K0 J	0404
R166	1430796	Top	T	7	chip resistor	0W06 47K J	0402
R167	1620031	Top	W	5	res network	0W06 2X1K0 J	0404
R169	1430718	Top	D	7	chip resistor	0W06 47R J	0402
R170	1430804	Top	W	4	chip resistor	0W06 100K J	0402
R171	1620031	Top	D	8	res network	0W06 2X1K0 J	0404
R172	1430796	Top	T	7	chip resistor	0W06 47K J	0402
R173	1620031	Top	X	4	res network	0W06 2X1K0 J	0404
R174	1430778	Top	X	4	chip resistor	0W06 10K J	0402
R176	1620031	Top	W	5	res network	0W06 2X1K0 J	0404
R179	1430754	Top	D	7	chip resistor	0W06 1K0 J	0402
R200	1419003	Top	U	6	chip resistor	0W5 0R22 J 200 PPM	1210
R202	1620043	Top	R	5	res network	0W03 4X100K J	0804



Item	Code	Side	X	Y	Description	Value	Type
R206	1430770	Top	R	5	chip resistor	0W06 4K7 J	0402
R207	1430770	Top	R	5	chip resistor	0W06 4K7 J	0402
R300	1411669	Top	U	4	chip resistor	0W1 22R J	0805
R301	1411669	Top	U	4	chip resistor	0W1 22R J	0805
R304	1430770	Top	B	7	chip resistor	0W06 4K7 J	0402
R350	1419009	Top	C	6	chip resistor	0W5 4R7 J 200 PPM	1210
R427	1430754	Top	R	4	chip resistor	0W06 1K0 J	0402
R428	1430770	Top	S	2	chip resistor	0W06 4K7 J	0402
R430	1430754	Top	P	3	chip resistor	0W06 1K0 J	0402
R431	1430770	Top	P	3	chip resistor	0W06 4K7 J	0402
R433	1430754	Top	R	5	chip resistor	0W06 1K0 J	0402
R434	1430770	Top	R	5	chip resistor	0W06 4K7 J	0402
R435	1430770	Top	P	3	chip resistor	0W06 4K7 J	0402
R450	1430770	Top	O	5	chip resistor	0W06 4K7 J	0402
R501	1430700	Top	K	7	chip resistor	0W06 10R J	0402
R503	1430778	Top	K	8	chip resistor	0W06 10K J	0402
R505	1430700	Top	J	5	chip resistor	0W06 10R J	0402
R506	1430718	Top	K	5	chip resistor	0W06 47R J	0402
R508	1430766	Top	L	8	chip resistor	0W06 3K9 J	0402
R509	1430740	Top	K	5	chip resistor	0W06 330R J	0402
R510	1430804	Top	L	8	chip resistor	0W06 100K J	0402
R511	1430794	Top	L	8	chip resistor	0W06 39K J	0402
R512	1430700	Top	L	8	chip resistor	0W06 10R J	0402
R513	1430700	Top	K	7	chip resistor	0W06 10R J	0402
R515	1430700	Top	J	7	chip resistor	0W06 10R J	0402
R517	1430772	Top	N	8	chip resistor	0W06 5K6 J	0402
R518	1430740	Top	N	8	chip resistor	0W06 330R J	0402
R519	1430706	Top	K	5	chip resistor	0W06 15R J	0402
R520	1430754	Top	N	8	chip resistor	0W06 1K0 J	0402
R521	1430764	Top	N	8	chip resistor	0W06 3K3 J	0402
R522	1430728	Top	N	7	chip resistor	0W06 120R J	0402
R523	1430740	Top	K	5	chip resistor	0W06 330R J	0402

Item	Code	Side	X	Y	Description	Value	Type
R524	1430790	Top	N	6	chip resistor	0W06 27K J	0402
R550	1430778	Top	L	7	chip resistor	0W06 10K J	0402
R601	1430758	Top	N	3	chip resistor	0W06 1K5 J	0402
R602	1430790	Top	M	2	chip resistor	0W06 27K J	0402
R604	1430772	Top	L	3	chip resistor	0W06 5K6 J	0402
R605	1430770	Top	N	4	chip resistor	0W06 4K7 J	0402
R606	1430770	Top	N	4	chip resistor	0W06 4K7 J	0402
R607	1430762	Top	M	5	chip resistor	0W06 2K2 J	0402
R609	1430758	Top	N	3	chip resistor	0W06 1K5 J	0402
R611	1430804	Top	N	2	chip resistor	0W06 100K J	0402
R621	1430774	Top	M	2	chip resistor	0W06 6K8 J	0402
R702	1430754	Top	M	6	chip resistor	0W06 1K0 J	0402
R703	1430744	Top	N	6	chip resistor	0W06 470R J	0402
R704	1430770	Top	M	5	chip resistor	0W06 4K7 J	0402
R705	1430790	Top	M	6	chip resistor	0W06 27K J	0402
R706	1430776	Top	N	7	chip resistor	0W06 8K2 J	0402
R721	1430796	Top	H	5	chip resistor	0W06 47K J	0402
R723	1430796	Top	H	5	chip resistor	0W06 47K J	0402
R724	1430690	Top	H	6	chip res jumper	0R0	0402
R749	1430681	Top	G	8	chip resistor	0W06 4R3 J	0402
R750	1430724	Top	H	8	chip resistor	0W06 82R J	0402
R802	1430748	Top	G	4	chip resistor	0W06 680R J	0402
R803	1430758	Top	I	4	chip resistor	0W06 1K5 J	0402
R804	1430740	Top	H	3	chip resistor	0W06 330R J	0402
R805	1430776	Top	H	3	chip resistor	0W06 8K2 J	0402
R806	1430776	Top	H	3	chip resistor	0W06 8K2 J	0402
R807	1430758	Top	I	3	chip resistor	0W06 1K5 J	0402
R808	1820035	Top	J	4	NTC res	47K J B=4050+-3%	0805
R816	1430776	Top	H	3	chip resistor	0W06 8K2 J	0402
R817	1430776	Top	I	3	chip resistor	0W06 8K2 J	0402
R851	1430690	Top	F	3	chip res jumper	0R0	0402
C100	2320584	Top	W	7	chip cap	X7R 1N0 J 50V	0402

Item	Code	Side	X	Y	Description	Value	Type
C101	2320544	Top	X	3	chip cap	NPO 22P J 50V	0402
C102	2320552	Top	U	4	chip cap	NPO 47P J 50V	0402
C103	2320544	Top	W	3	chip cap	NPO 22P J 50V	0402
C104	2320544	Top	W	3	chip cap	NPO 22P J 50V	0402
C107	2320778	Top	X	5	chip cap	X7R 10N K 16V	0402
C108	2320552	Top	U	5	chip cap	NPO 47P J 50V	0402
C109	2320552	Top	U	4	chip cap	NPO 47P J 50V	0402
C150	2320552	Top	S	7	chip cap	NPO 47P J 50V	0402
C151	2320805	Top	X	4	chip cap	X5R 100N K 10V	0402
C152	2320552	Top	S	7	chip cap	NPO 47P J 50V	0402
C154	2320805	Top	U	7	chip cap	X5R 100N K 10V	0402
C155	2320805	Top	U	7	chip cap	X5R 100N K 10V	0402
C156	2320552	Top	X	4	chip cap	NPO 47P J 50V	0402
C158	2320552	Top	S	8	chip cap	NPO 47P J 50V	0402
C164	2313213	Top	T	8	chip cap	X5R 10U K 6V3	1206
C165	2320805	Top	U	7	chip cap	X5R 100N K 10V	0402
C166	2320552	Top	D	7	chip cap	NPO 47P J 50V	0402
C168	2320805	Top	U	7	chip cap	X5R 100N K 10V	0402
C169	2320805	Top	D	7	chip cap	X5R 100N K 10V	0402
C170	2320552	Top	S	7	chip cap	NPO 47P J 50V	0402
C172	2320552	Top	S	7	chip cap	NPO 47P J 50V	0402
C174	2320805	Top	U	7	chip cap	X5R 100N K 10V	0402
C175	2320805	Top	U	7	chip cap	X5R 100N K 10V	0402
C176	2320552	Top	X	5	chip cap	NPO 47P J 50V	0402
C180	2320552	Top	S	8	chip cap	NPO 47P J 50V	0402
C181	2320552	Top	S	8	chip cap	NPO 47P J 50V	0402
C184	2320552	Top	S	8	chip cap	NPO 47P J 50V	0402
C186	2312243	Top	C	7	chip cap	X5R 4U7 K 6V3	0805

Item	Code	Side	X	Y	Description	Value	Type
C193	2320560	Top	U	7	chip cap	NPO 100P J 50V	0402
C194	2320805	Top	U	7	chip cap	X5R 100N K 10V	0402
C195	2320560	Top	U	7	chip cap	NPO 100P J 50V	0402
C202	2320778	Top	U	5	chip cap	X7R 10N K 16V	0402
C203	2320805	Top	S	9	chip cap	X5R 100N K 10V	0402
C211	2320481	Top	T	8	chip cap	X5R 1U K 6V3	0603
C222	2320805	Top	R	6	chip cap	X5R 100N K 10V	0402
C223	2320805	Top	P	8	chip cap	X5R 100N K 10V	0402
C224	2320805	Top	P	8	chip cap	X5R 100N K 10V	0402
C225	2320805	Top	R	6	chip cap	X5R 100N K 10V	0402
C226	2320481	Top	T	7	chip cap	X5R 1U K 6V3	0603
C227	2320778	Top	R	5	chip cap	X7R 10N K 16V	0402
C229	2320805	Top	R	6	chip cap	X5R 100N K 10V	0402
C230	2320778	Top	S	5	chip cap	X7R 10N K 16V	0402
C232	2320778	Top	R	5	chip cap	X7R 10N K 16V	0402
C233	2320481	Top	T	7	chip cap	X5R 1U K 6V3	0603
C234	2320481	Top	R	9	chip cap	X5R 1U K 6V3	0603
C235	2320481	Top	S	9	chip cap	X5R 1U K 6V3	0603
C237	2320481	Top	U	5	chip cap	X5R 1U K 6V3	0603
C238	2320805	Top	S	6	chip cap	X5R 100N K 10V	0402
C239	2320481	Top	R	9	chip cap	X5R 1U K 6V3	0603
C240	2320481	Top	Q	9	chip cap	X5R 1U K 6V3	0603
C241	2320805	Top	P	7	chip cap	X5R 100N K 10V	0402
C242	2320481	Top	T	6	chip cap	X5R 1U K 6V3	0603
C243	2320481	Top	T	7	chip cap	X5R 1U K 6V3	0603
C245	2320481	Top	Q	9	chip cap	X5R 1U K 6V3	0603

Item	Code	Side	X	Y	Description	Value	Type
C246	2320481	Top	P	7	chip cap	X5R 1U K 6V3	0603
C247	2320481	Top	P	6	chip cap	X5R 1U K 6V3	0603
C248	2320481	Top	P	6	chip cap	X5R 1U K 6V3	0603
C249	2320481	Top	P	6	chip cap	X5R 1U K 6V3	0603
C250	2320481	Top	P	6	chip cap	X5R 1U K 6V3	0603
C251	2320481	Top	R	9	chip cap	X5R 1U K 6V3	0603
C252	2320481	Top	P	7	chip cap	X5R 1U K 6V3	0603
C253	2320481	Top	P	7	chip cap	X5R 1U K 6V3	0603
C254	2320481	Top	P	6	chip cap	X5R 1U K 6V3	0603
C255	2320481	Top	P	7	chip cap	X5R 1U K 6V3	0603
C256	2320481	Top	P	6	chip cap	X5R 1U K 6V3	0603
C257	2320481	Top	P	7	chip cap	X5R 1U K 6V3	0603
C258	2320481	Top	P	7	chip cap	X5R 1U K 6V3	0603
C259	2320481	Top	P	8	chip cap	X5R 1U K 6V3	0603
C260	2313213	Top	P	9	chip cap	X5R 10U K 6V3	1206
C264	2320481	Top	R	9	chip cap	X5R 1U K 6V3	0603
C270	2313213	Top	V	2	chip cap	X5R 10U K 6V3	1206
C271	2313213	Top	U	2	chip cap	X5R 10U K 6V3	1206
C273	2320805	Top	V	2	chip cap	X5R 100N K 10V	0402
C302	2318001	Top	C	7	chip cap	X5R 1U0 K 16V	0805
C303	2320805	Top	C	6	chip cap	X5R 100N K 10V	0402
C304	2320805	Top	D	6	chip cap	X5R 100N K 10V	0402
C305	2320544	Top	B	7	chip cap	NPO 22P J 50V	0402
C351	2312243	Top	C	6	chip cap	X5R 4U7 K 6V3	0805
C400	2320805	Top	O	3	chip cap	X5R 100N K 10V	0402
C401	2320805	Top	R	4	chip cap	X5R 100N K 10V	0402
C402	2320805	Top	O	6	chip cap	X5R 100N K 10V	0402
C403	2320805	Top	O	4	chip cap	X5R 100N K 10V	0402

Item	Code	Side	X	Y	Description	Value	Type
C404	2320805	Top	O	5	chip cap	X5R 100N K 10V	0402
C405	2320805	Top	R	4	chip cap	X5R 100N K 10V	0402
C422	2320778	Top	R	4	chip cap	X7R 10N K 16V	0402
C423	2320584	Top	S	3	chip cap	X7R 1N0 J 50V	0402
C424	2320778	Top	P	3	chip cap	X7R 10N K 16V	0402
C425	2320584	Top	O	3	chip cap	X7R 1N0 J 50V	0402
C426	2320778	Top	R	5	chip cap	X7R 10N K 16V	0402
C427	2320584	Top	S	5	chip cap	X7R 1N0 J 50V	0402
C428	2320778	Top	P	3	chip cap	X7R 10N K 16V	0402
C435	2320778	Top	L	6	chip cap	X7R 10N K 16V	0402
C450	2320778	Top	S	2	chip cap	X7R 10N K 16V	0402
C451	2320805	Top	P	2	chip cap	X5R 100N K 10V	0402
C454	2320778	Top	S	2	chip cap	X7R 10N K 16V	0402
C502	2320576	Top	N	8	chip cap	X7R 470P J 50V	0402
C503	2320783	Top	L	7	chip cap	X7R 33N K 10V	0402
C504	2320778	Top	K	7	chip cap	X7R 10N K 16V	0402
C505	2320778	Top	L	8	chip cap	X7R 10N K 16V	0402
C507	2320778	Top	K	7	chip cap	X7R 10N K 16V	0402
C508	2420019	Top	L	8	chip cap	PPS 68N J 16V	1210
C509	2320584	Top	L	7	chip cap	X7R 1N0 J 50V	0402
C511	2320481	Top	J	8	chip cap	X5R 1U K 6V3	0603
C512	2320576	Top	N	8	chip cap	X7R 470P J 50V	0402
C513	2320576	Top	N	8	chip cap	X7R 470P J 50V	0402
C514	2320550	Top	M	2	chip cap	NPO 39P J 50V	0402
C515	2320552	Top	K	8	chip cap	NPO 47P J 50V	0402
C516	2320508	Top	K	5	chip cap		0402
C517	2320620	Top	K	5	chip cap	X7R 10N J 16V	0402
C518	2320618	Top	K	8	chip cap	X7R 4N7 J 25V	0402
C519	2320520	Top	L	2	chip cap	NPO 2P2 C 50V	0402

Item	Code	Side	X	Y	Description	Value	Type
C520	2320481	Top	L	5	chip cap	X5R 1U K 6V3	0603
C521	2320805	Top	K	7	chip cap	X5R 100N K 10V	0402
C522	2320778	Top	J	7	chip cap	X7R 10N K 16V	0402
C523	2320584	Top	N	8	chip cap	X7R 1N0 J 50V	0402
C524	2320576	Top	O	5	chip cap	X7R 470P J 50V	0402
C525	2320584	Top	N	7	chip cap	X7R 1N0 J 50V	0402
C526	2320508	Top	L	2	chip cap	NP0 1P0 C 50V	0402
C532	2320536	Top	J	7	chip cap	NP0 10P J 50V	0402
C550	2320584	Top	L	7	chip cap	X7R 1N0 J 50V	0402
C602	2320633	Top	M	4	chip cap	NP0 220P J 25V	0402
C603	2320540	Top	M	2	chip cap	NP0 15P J 50V	0402
C604	2320596	Top	K	5	chip cap	X7R 3N3 J 50V	0402
C605	2320560	Top	M	4	chip cap	NP0 100P J 50V	0402
C606	2320584	Top	M	5	chip cap	X7R 1N0 J 50V	0402
C607	2320778	Top	N	2	chip cap	X7R 10N K 16V	0402
C608	2320536	Top	I	4	chip cap	NP0 10P J 50V	0402
C610	2320596	Top	K	4	chip cap	X7R 3N3 J 50V	0402
C611	2320540	Top	K	3	chip cap	NP0 15P J 50V	0402
C612	2320120	Top	M	4	chip cap	X7R 22N K 25V	0603
C613	2360001	Top	M	4	chip cap	X5R 330N K 10V	0603
C614	2320536	Top	L	3	chip cap	NP0 10P J 50V	0402
C615	2320633	Top	L	3	chip cap	NP0 220P J 25V	0402
C618	2320481	Top	N	3	chip cap	X5R 1U K 6V3	0603
C621	2320584	Top	K	4	chip cap	X7R 1N0 J 50V	0402
C627	2320536	Top	J	4	chip cap	NP0 10P J 50V	0402
C629	2320532	Top	N	4	chip cap	NP0 6P8 C 50V	0402
C630	2320540	Top	N	4	chip cap	NP0 15P J 50V	0402
C631	2320524	Top	N	4	chip cap	NP0 3P3 C 50V	0402

Item	Code	Side	X	Y	Description	Value	Type
C632	2320584	Top	N	4	chip cap	X7R 1N0 J 50V	0402
C637	2320560	Top	N	4	chip cap	NPO 100P J 50V	0402
C638	2320778	Top	N	4	chip cap	X7R 10N K 16V	0402
C645	2320536	Top	J	4	chip cap	NPO 10P J 50V	0402
C646	2320536	Top	L	4	chip cap	NPO 10P J 50V	0402
C647	2320536	Top	L	4	chip cap	NPO 10P J 50V	0402
C650	2320536	Top	I	4	chip cap	NPO 10P J 50V	0402
C651	2320540	Top	K	4	chip cap	NPO 15P J 50V	0402
C652	2320481	Top	M	5	chip cap	X5R 1U K 6V3	0603
C653	2320805	Top	L	4	chip cap	X5R 100N K 10V	0402
C660	2320536	Top	L	4	chip cap	NPO 10P J 50V	0402
C666	2320552	Top	L	2	chip cap	NPO 47P J 50V	0402
C701	2320783	Top	M	5	chip cap	X7R 33N K 10V	0402
C702	2320584	Top	M	6	chip cap	X7R 1N0 J 50V	0402
C704	2320778	Top	N	7	chip cap	X7R 10N K 16V	0402
C706	2320778	Top	N	6	chip cap	X7R 10N K 16V	0402
C707	2320778	Top	N	7	chip cap	X7R 10N K 16V	0402
C708	2320778	Top	L	6	chip cap	X7R 10N K 16V	0402
C710	2320778	Top	L	7	chip cap	X7R 10N K 16V	0402
C712	2320778	Top	M	6	chip cap	X7R 10N K 16V	0402
C714	2360001	Top	N	5	chip cap	X5R 330N K 10V	0603
C715	2320620	Top	M	5	chip cap	X7R 10N J 16V	0402
C716	2320548	Top	M	5	chip cap	NPO 33P J 50V	0402
C718	2320778	Top	N	6	chip cap	X7R 10N K 16V	0402
C722	2320778	Top	L	7	chip cap	X7R 10N K 16V	0402
C723	2320778	Top	N	7	chip cap	X7R 10N K 16V	0402
C753	2320560	Top	G	5	chip cap	NPO 100P J 50V	0402
C756	2320560	Top	H	6	chip cap	NPO 100P J 50V	0402
C758	2320785	Top	G	6	chip cap	X7R 47N K 10V	0402



Item	Code	Side	X	Y	Description	Value	Type
C759	2320602	Top	H	6	chip cap	NPO 4P7 C 50V	0402
C760	2320538	Top	G	7	chip cap	NPO 12P J 50V	0402
C761	2320596	Top	H	7	chip cap	X7R 3N3 J 50V	0402
C762	2320805	Top	G	8	chip cap	X5R 100N K 10V	0402
C763	2320538	Top	G	8	chip cap	NPO 12P J 50V	0402
C766	2320560	Top	G	6	chip cap	NPO 100P J 50V	0402
C767	2320554	Top	H	7	chip cap	NPO 56P J 50V	0402
C769	2320584	Top	H	7	chip cap	X7R 1N0 J 50V	0402
C770	2320518	Top	J	8	chip cap	NPO 1P8 C 50V	0402
C771	2320544	Top	M	7	chip cap	NPO 22P J 50V	0402
C772	2320544	Top	M	7	chip cap	NPO 22P J 50V	0402
C782	2320526	Top	H	7	chip cap	NPO 3P9 C 50V	0402
C785	2320508	Top	F	8	chip cap	NPO 1P0 C 50V	0402
C786	2320805	Top	H	7	chip cap	X5R 100N K 10V	0402
C801	2320538	Top	F	2	chip cap	NPO 12P J 50V	0402
C804	2320548	Top	I	3	chip cap	NPO 33P J 50V	0402
C805	2320548	Top	H	3	chip cap	NPO 33P J 50V	0402
C807	2320620	Top	J	4	chip cap	X7R 10N J 16V	0402
C809	2320536	Top	I	5	chip cap	NPO 10P J 50V	0402
C812	2320620	Top	I	3	chip cap	X7R 10N J 16V	0402
C817	2313213	Top	J	3	chip cap	X5R 104K 6V3	1206
C818	2320516	Top	H	3	chip cap	NPO 1P5 C 50V	0402
C840	2320481	Top	G	5	chip cap	X5R 1U K 6V3	0603
C841	2313213	Top	J	3	chip cap	X5R 10U K 6V3	1206
C842	2320536	Top	G	4	chip cap	NPO 10P J 50V	0402
L100	3203743	Top	W	7	ferr bead	OR03 42R/ 100MHz 3A	0805
L270	3203743	Top	V	2	ferr bead	OR03 42R/ 100MHz 3A	0805
L271	3640091	Top	T	2	chip coil	15UH K 0.8A	6.5X5.3X2.0
L501	3646007	Top	M	2	chip coil	27N J Q27/ 800MHz	0402

Item	Code	Side	X	Y	Description	Value	Type
L503	3646117	Top	L	2	chip coil	5N6 +-0N1 Q26/1GHz	0402
L504	3646055	Top	L	2	chip coil	8N2 J Q28/ 800MHz	0402
L505	3646055	Top	L	2	chip coil	8N2 J Q28/ 800MHz	0402
L507	3646131	Top	J	5	chip coil	3N9 +-0N1 Q28/1GHz	0402
L609	3646131	Top	M	4	chip coil	3N9 +-0N1 Q28/1GHz	0402
L610	3646131	Top	L	4	chip coil	3N9 +-0N1 Q28/1GHz	0402
L611	3645219	Top	N	4	chip coil	10N J Q31/ 250MHz	0603
L612	3646127	Top	L	5	chip coil	1N3 +- 0N1 Q50/1GHz	0402
L666	3646129	Top	L	5	chip coil	8N2 +-0N1 Q26/1GHz	0402
L701	3645223	Top	L	6	chip coil	33N J Q40/ 250MHz	0603
L751	3646405	Top	F	7	chip coil	6N2 J Q20/ 250MHz	0402
L753	3645013	Top	G	6	chip coil	220NH K Q15/ 25MHz	0603
L754	3645195	Top	H	7	chip coil	82N J Q12/ 100MHz	0603
L759	3645243	Top	J	7	chip coil	47N J Q38/ 200MHz	0603
L760	3645229	Top	M	7	chip coil	120N J Q32/ 150MHz	0603
L761	3645229	Top	L	7	chip coil	120N J Q32/ 150MHz	0603
L770	3645195	Top	H	6	chip coil	82N J Q12/ 100MHz	0603
L771	3646099	Top	H	7	chip coil	2N7 +-0N1 Q29/1GHz	0402
L773	3646099	Top	G	7	chip coil	2N7 +-0N3 Q29/800M	0402
L801	3645185	Top	H	3	chip coil	10N J Q12/ 100MHz	0603

Item	Code	Side	X	Y	Description	Value	Type
L812	3646063	Top	F	2	chip coil	22N J Q28/ 800MHz	0402
L851	3646409	Top	W	1	chip coil	1N0 +-0N3 Q34/800M	0402
T603	4550211	Top	L	5	balun transf	1850- 1990MHz	SMD
D100	4110028	Top	W	6	TVS DI	16V 600W 23A	DO214AA
D200	4370841	Top	Q	7	UEM V6.0 W-DOG	ENA T009L	TFBGA168
D400	4370843	Top	Q	5	UPP8M V2.1A	F751986A C035	UBGA144
D450	4341207	Top	Q	2	Flash NMP DCT4	64MBIT	40MHz
V150	4211623	Top	W	4	MFET N&P FDG6332C	0R4@2V5	SOT363
V151	4211631	Top	W	4	MFETX2 UM6K1N N	30V 0A1 7R	SOT363
V270	4110441	Top	U	1	SCH DI STPS0520Z	20V 0.5A	SOD123
V300	4860235	Top	J	9	LED LGM470- K2M1-1 GRN	570NM	SMT2
V301	4860235	Top	L	9	LED LGM470- K2M1-1 GRN	570NM	SMT2
V302	4860235	Top	J	1	LED LGM470- K2M1-1 GRN	570NM	SMT2
V303	4860235	Top	L	1	LED LGM470- K2M1-1 GRN	570NM	SMT2
V305	4860235	Top	S	6	LED LGM470- K2M1-1 GRN	570NM	SMT2
V306	4860235	Top	W	4	LED LGM470- K2M1-1 GRN	570NM	SMT2
V307	4860235	Top	W	6	LED LGM470- K2M1-1 GRN	570NM	SMT2
V308	4860235	Top	S	4	LED LGM470- K2M1-1 GRN	570NM	SMT2
V310	4860235	Top	H	1	LED LGM470- K2M1-1 GRN	570NM	SMT2
V311	4860235	Top	H	9	LED LGM470- K2M1-1 GRN	570NM	SMT2
V314	4860235	Top	O	4	LED LGM470- K2M1-1 GRN	570NM	SMT2
V315	4860235	Top	O	6	LED LGM470- K2M1-1 GRN	570NM	SMT2

Item	Code	Side	X	Y	Description	Value	Type
V351	4860171	Top	B	4	IRDA GP2W1002YP	1.152MB	IRDA 1.3
V500	4210100	Top	N	7	TR BC848W N	30V 0.1A 100MHz	SOT323
V601	4110921	Top	N	5	CAP.DI BBY57- 02W	1/4 16/4P	SOD523
V602	4112491	Top	N	3	PIN DI BA892	35V<0R7@0.1 GHz	SOD523
V701	4110921	Top	L	5	CAP.DI BBY57- 02W	1/4 16/4P	SOD523
V801	4110055	Top	I	3	SCHDIX2 BAT17- 07	4V CT<1PF	SOT143
Z300	4120031	Top	W	2	EMI/ESD filt	EMIF10- 1K010F1	BGA24
Z601	4511331	Top	J	4	Dual Saw Filt	1850-1885/ 1875-1910	
Z750	4511295	Top	G	8	Saw Filt	1960.0MHz/ 3.7DB	3X3X1
Z753	4511329	Top	I	8	Saw Filt	128.1+/- 0.61MHz	9X5X1.6
Z801	4510345	Top	G	4	ISOLATOR	1.85-1.91GHz/ 15DB	4X4X2
Z804	4512159	Top	E	6	Dupl	1850-1910/ 1930- 1990MHz	
N271	4341255	Top	U	2	VREG PWM/LDO	(NCP1500)	MSOP8
N501	4341293	Top	K	8	2XSYNTH 2.5/1.2G	(LMX2370)	MLF24
N502	4341295	Top	L	2	RF AMP G5.5DB/ 2.1GHz	(ULOBA)	SC70-6
N601	4370857	Top	M	3	ROBIND SSBUP- CONVERTER	CDMA	TFBGA
N602	4370887	Top	K	4	HORNET RF2357E7	PCS DRIVER AMP	
N605	4341311	Top	I	4	Switch SPDT GAAS	(SW-437)	SC70-6
N701	4370851	Top	M	6	BATMAND RFIC RCVR	CDMA	UFBGA84
N750	4370893	Top	G	7	LNA/MIXER/ VERTER	DOWNCON- VERTER	VQFN-24 R
N802	4350339	Top	H	4	PW AMP 1850- 1910MHz	SNAPPER CDMA	

Item	Code	Side	X	Y	Description	Value	Type
G501	4510347	Top	M	8	VCTCX0	19.2MHz +/- 1.5PPM 2.7V	
G502	4350329	Top	K	6	VCO 986-1034/ 2040-2140MHz	2.7V	
B200	4510303	Top	T	8	CRYSTAL	32.768KHz +- 20PPM	12.5PF
F100	5119019	Top	X	7	SM FUSE F	1.5A 32V	0603
S300	5209001	Top	B	6	SM SW TACT SPST	12V 50MA	Side Key
X100	5469061	Top	Y	5	SM SYSTEM CONN+3DC+MIC +JACK+6AF		
X101	5400227	Top	T	4	SM BATTERY CONN SPR	4POL 100V 2A	
X800	5429023	Top	E	2	SM CONN COAX+SW+GASK	50R 2.5GHz	
X810	9510434	Top	D	4	SPRING CLIP	M3E14601 NSJ-3	HD925
X811	9510434	Top	C	4	SPRING CLIP	M3E14601 NSJ-3	HD925
A400	9517105				UBGA SHIELD ASSY	DMC03681	HDAA3
A600	9517107				RF TX SHIELD ASSY	DMC03682	HDAA3
A700	9517104				RF RX SHIELD ASSY	DMC03680	HDAA3
A800	9510686				DUPLEXER SHIELD	DMD07064	HDAA3

